

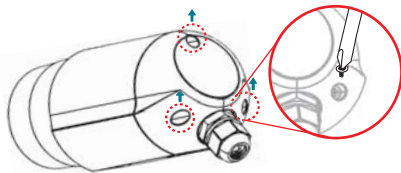


Accessories / 配件



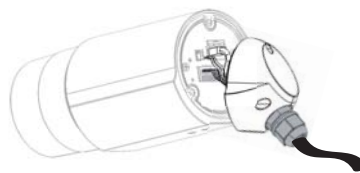
1 Installation / 安装

* Outdoor
Remove the Cover / 取下盖子



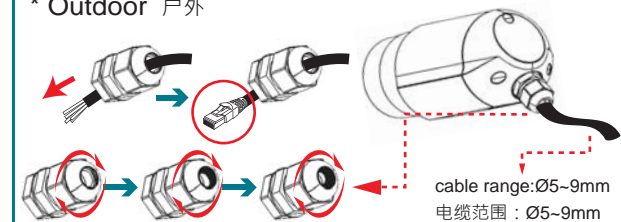
2

Insert the LAN cable to the cable hole before installation
安装前先将电缆线穿入电缆孔。

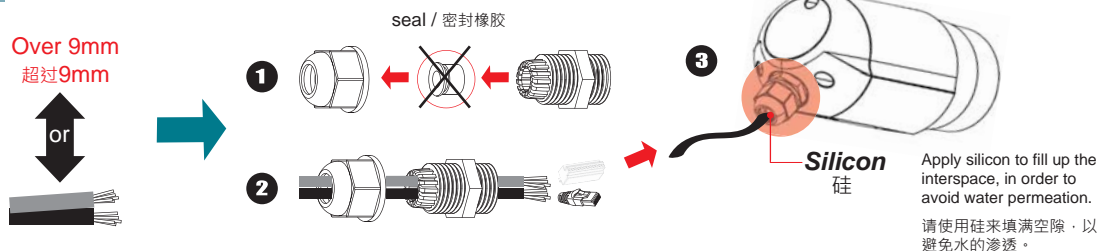


2-1 Cable management / 理线方式

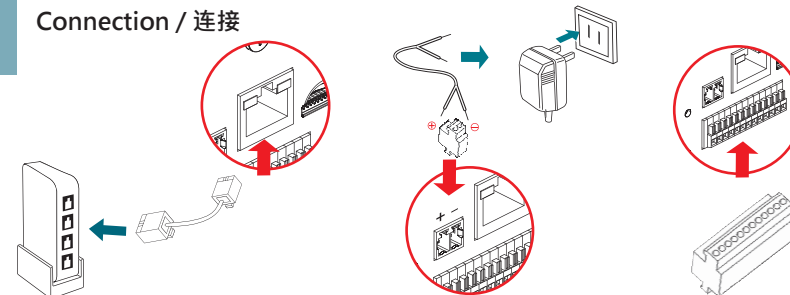
* Outdoor 户外



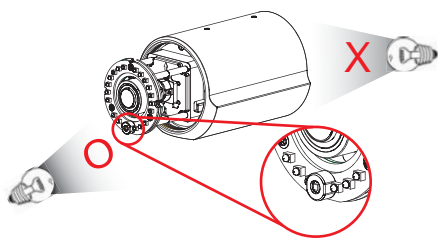
2-2 Cable management / 理线方式



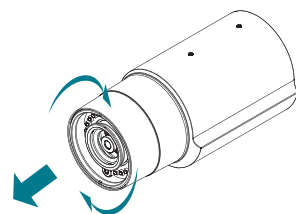
3 Connection / 连接



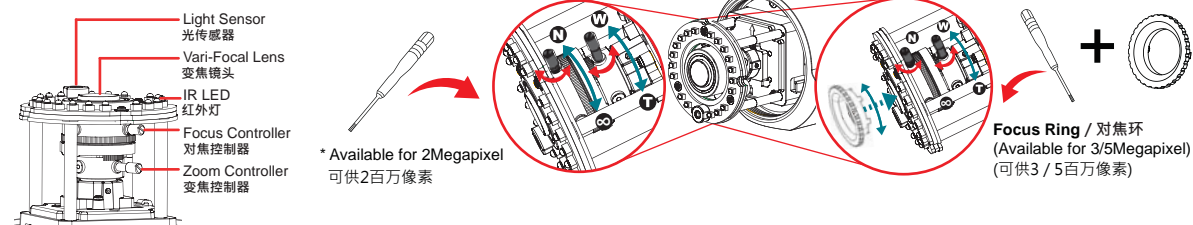
4 Light Sensor / 光传感器



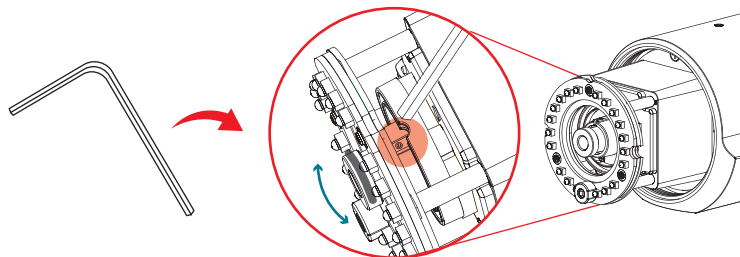
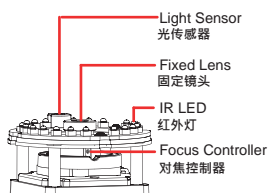
5 Lens Adjustment / 镜头调整



5-1 Vari-Focal Lens / 变焦镜头

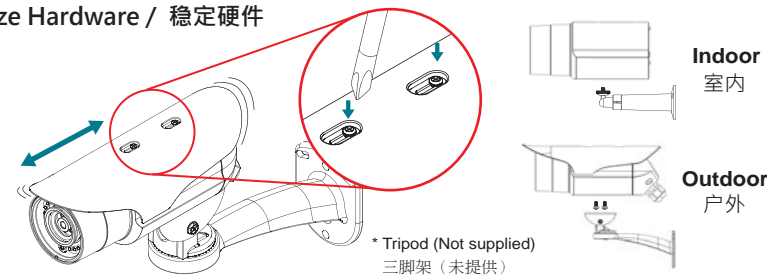


5-2 Fixed Lens / 固定镜头



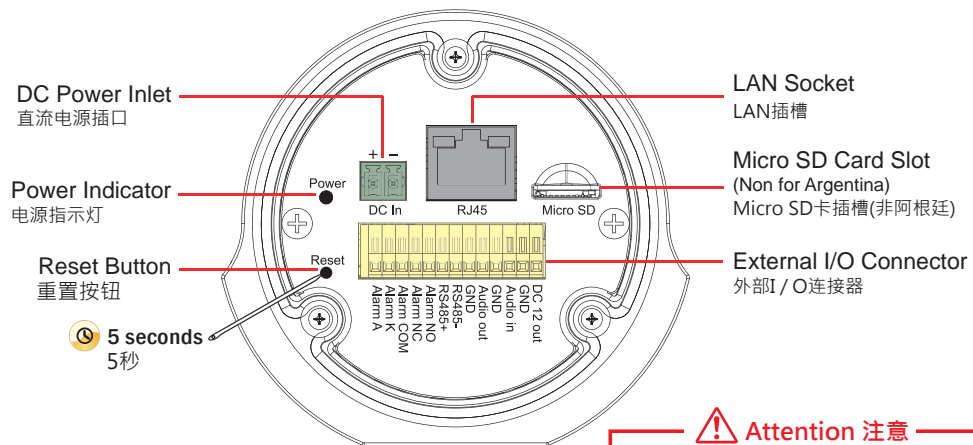
6 Stabilize Hardware / 稳定硬件

* Outdoor
户外



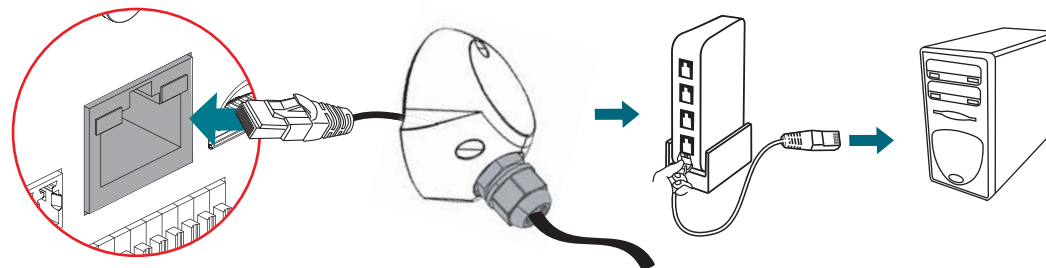


Overview / 机身说明

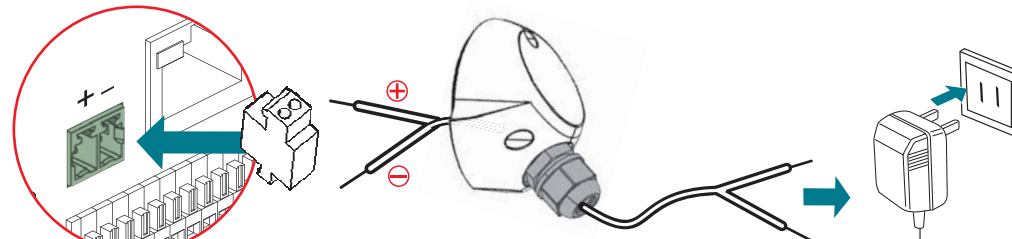


⚠ Attention 注意
The ITE is to be connected only to PoE networks without routing to the outside plant.
ITE是只能连接到PoE网络没有路由到外面

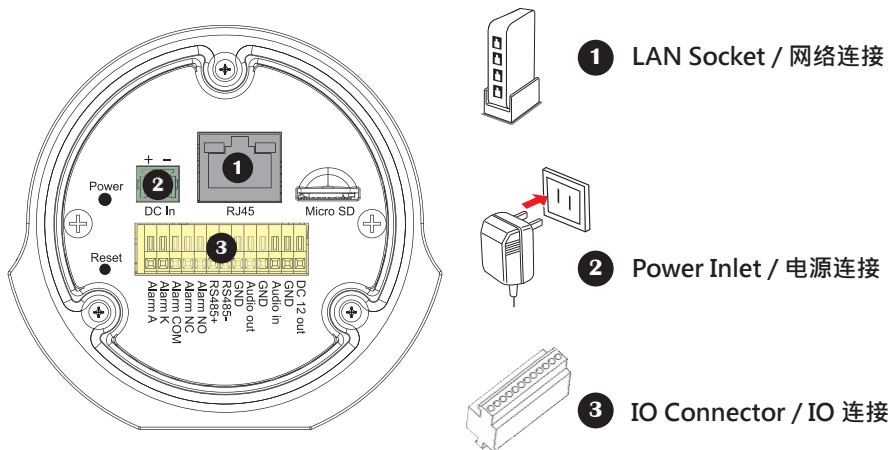
1 LAN Socket / 网络连接



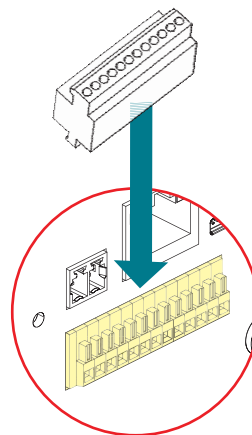
2 Power Inlet / 电源连接



Connect / 连接方式



3 IO Connector / IO 连接



External I/O setting / 外部 I/O 设置

