



Indoor Mini Dome Network Camera Hardware Installation

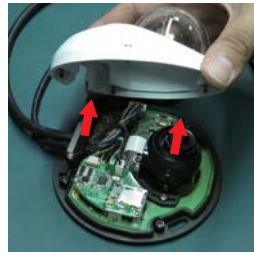
Package Contents



1 Start the Installation

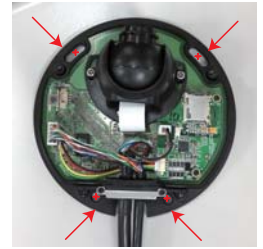
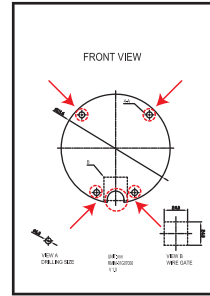


1-1 Remove the Cover



2 Mounting

Mounting the camera in accordance with mounting position sheet attached.



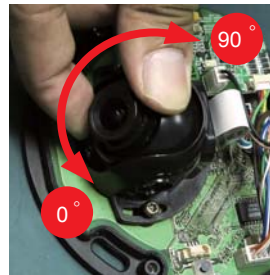
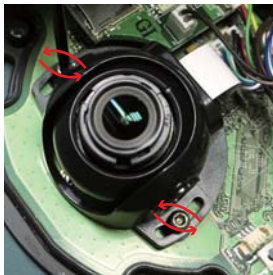
Suggestion:
Hole size $\phi 6\text{mm}$, Depth 24mm

3 Adjust the Lens Focus Angle

Use the screwdriver to loosen

Panning coverage

Tilting coverage



Attention

Beware electric shock or damages with wet hands

4 Focus Ring

Lens tool for adjusting focus.



4-1 Lock

Recommend Tightening Force 4kg



6 Insert the SD card



5 Ceiling or Wall Mount Setting



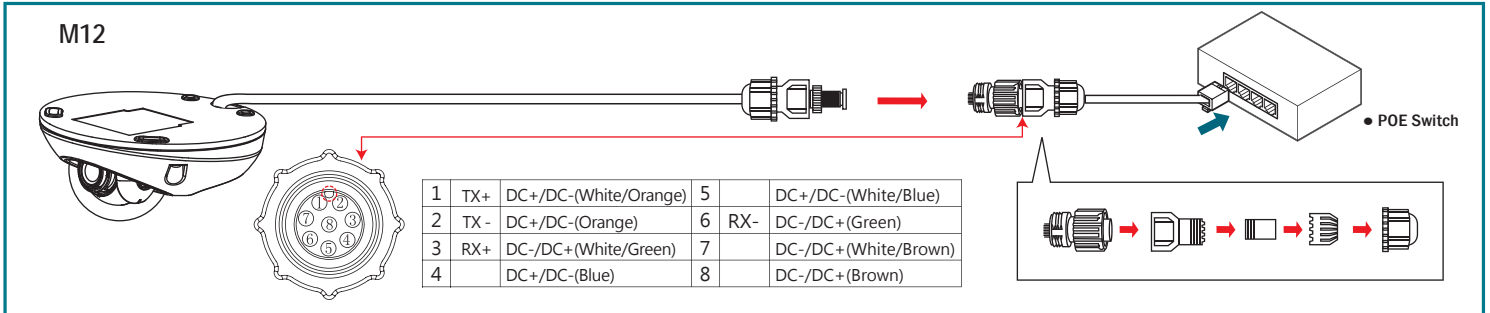
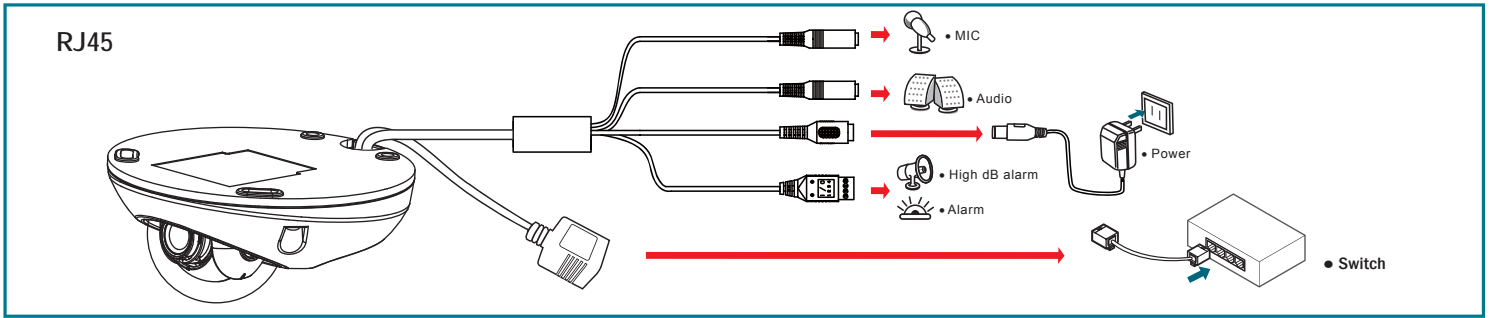
7 Lock the Screws Holding the Cover



Lock
Recommend Tightening Force 4kg



Indoor Mini Dome Network Camera Connection Diagram

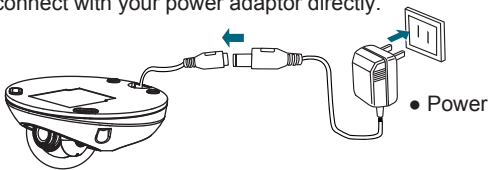


Connect the product to the switch hub and PC.

Prepare the product, your PC and switch hub ready for connection. Make sure that your PC has a LAN port available for connection to the network cable of the product.

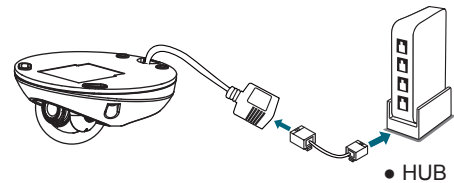
1 Connect to the power source (as shown in the figure).

Please connect with your power adaptor directly.



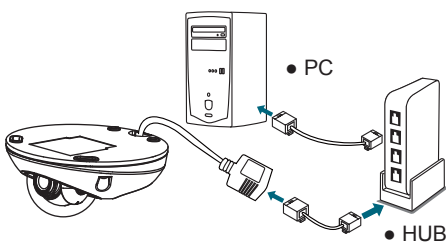
2 Connect to the switch hub (as shown in the figure).

Use a network cable and plug it in the LAN port of the product. Plug the other end of the cable in the LAN port of the hub.



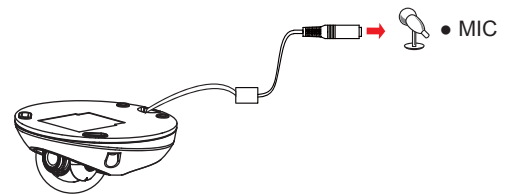
3 (as shown in the figure).

Prepare the product, your PC and switch hub ready for connection. Make sure that your PC has a LAN port available for connection to the network cable of the product.



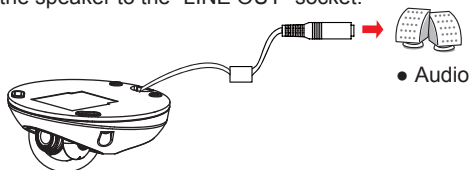
4 Connect to microphone in.

Connect the microphone with 3.5mm phone jack into the "MIC IN".



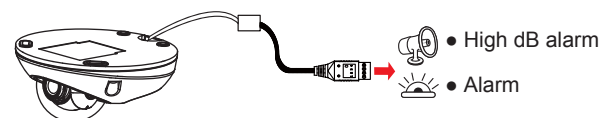
5 Connect to speaker

Connect the speaker to the "LINE OUT" socket.



6 Connect to Alarm/Reset

Connect to an extension I/O terminal block which is used to connect external infrared detectors, beepers and smoke detectors.



7 Turn on the power of the PC and hub.

